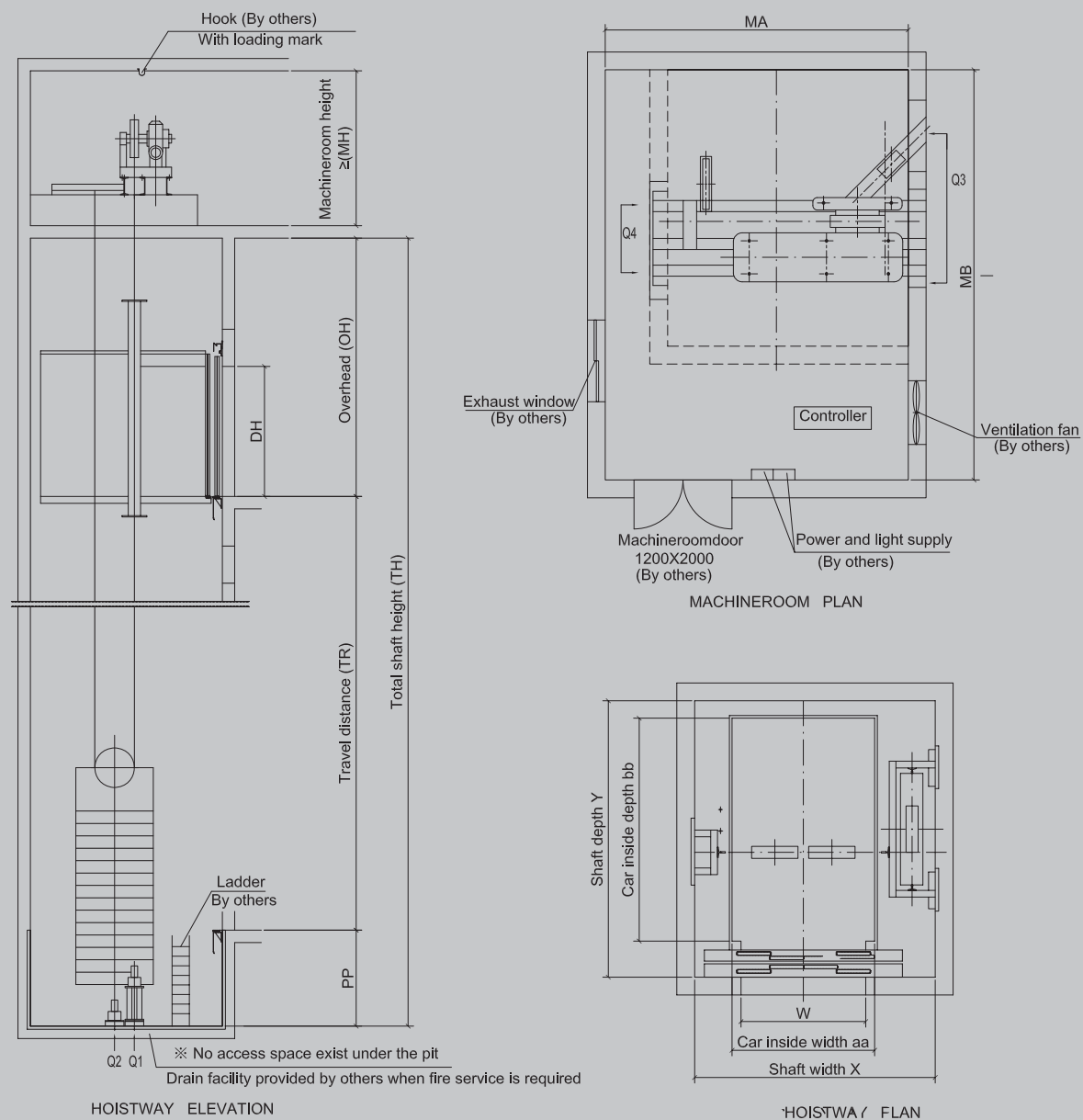


W ◀ WELL MACHINE ROOM PLAN ▶



S ◀ Standard Functions of BLT Elevator ▶

- ▶ **1. Full collective selective control**
An automatic traveling control mode by analyzing signals from every landing, car and other special signals.
- ▶ **2. Attendant travel**
Auto-directional, attendant-directional, non auto-close door (attendant should push close button for inching close, when door doesn't close fully, release the button and door auto-open), bypass
- ▶ **3. Independent travel**
All hall call signals will be cancelled, elevators only respond to the car call.
- ▶ **4. Door auto-open when unlocking**
When unlocking, car door will be opened automatically if elevator is at the door opening zone.
- ▶ **5. Motor jammed and overheat protection**
When the system monitors whether the motor is jammed or overheated, the elevator will be stopped until the motor recovered to normal condition.
- ▶ **6. Main circuit contactor protection**
Check if the contact in the main circuit contactor can work normally, car travel will be stopped if it is in abnormal conditions.
- ▶ **7. Door auto-open when arrival**
Car door will be auto-opened when the elevator arrives at the destination floor.
- ▶ **8. Fault self-diagnostic function**
The system can judge fault and record based on the collected signals by its self-diagnostic system.
- ▶ **9. Hall call registration and memory display**
When hall call button is pushed, the system will switch on the button light for call accepted and registered. The elevator will start traveling.
- ▶ **10. Travel direction and floor scrolling message display**
Car operation panel and calling board have dot-matrix display for floor and scrolling display for travel direction.
- ▶ **11. Full car bypass**
When full load, elevator doesn't respond to hall call signals from the passing floor and only respond to the car call signals.
- ▶ **12. Door holding time automatic**
In the mode of full automatic travel, the door will keep opening for several seconds then close automatically when the elevator arrives at the floor. The time delay can be set in the system.
- ▶ **13. Door open with floor button**
Car door will be opened automatically if the floor button is pushed.
- ▶ **14. Call reversal registration**
The call will be registered if call direction of this floor is reversal to travel direction, otherwise the door will be opened.
- ▶ **15. Car light and ventilation fan shut off automatically**
If no call or call registration exceeds a period of time(which can be set), car light and fan are automatically shut off. If call is received, light and fan are on again.
- ▶ **16. Non-leveling zone automatic leveling**
When elevator is under the non-inspection state and doesn't stop at the leveling zone, elevator will move to the leveling zone with slow speed as long as it meets the safety requirements of starting.
- ▶ **17. Car overload indicator**
When car is overloaded, overload light on car operation panel is on and buzzer sounds.

S ◀ Standard Functions of BLT Elevator ▶

▶ 18. Lock service

In the state of full automatic travel, if the lock switch is actuated, all call registered will be eliminated, elevator will return to home landing, shut off the car light with door close automatically and stop the elevator. The elevator will start to travel again after the lock switch is reset.

▶ 19. Full car bypass indicator

Landing indicator shows it is in the state of bypass.

▶ 20. Terminal overstep protection

Terminal protection switches are installed on both terminals, car will be stopped traveling when system found the switches are actuated.

▶ 21. Door zone limit protection

Car will be stopped traveling if system detects that hall door or car door has been opened not in door opening zone.

▶ 22. Anti-stall protection

The elevator will stop when hoist rope is slipping.

▶ 23. Door interlock safety protection

Elevator would stop when system found the safety circuit of door interlock break.

▶ 24. Safety door edge protection

When safety door edge is actuated, re-open the door and it remains open until it stops.

▶ 25. Terminal floor data correction

System will automatically correct floor data when elevator arrives at terminal landing floor.

▶ 26. Fault stop, self-rescue

When elevator breaks down with emergency stop in non-opening zone. The elevator will creep to the nearest floor, and open the door after leveling.

▶ 27. Program run WDT protection

WDT detects continuously if the program runs wrongly, all output resetting system will be cut out when mistakes are found.

▶ 28. Power failure data holding

All running data will be saved completely when power cut.

▶ 29. Learning function

Use learning function of the system to check data of well (travel distance, correction switches location, pre-limit switches location etc.) and save these data permanently before the elevator starts traveling.

▶ 30. Intercom

Push intercom button on the car operation panel, passengers in the car can communicate with people in the machine room and supervise room of the elevator.

▶ 31. Fault history record

The system can record 50 recent faults, including floor, code.

▶ 32. Emergency car lighting supply

Emergency lighting supply in the car operation panel will turn on automatically when power cut.

▶ 33. Speed monitoring

The system will monitor travel speed of elevator all the time in order to prevent from over-speed or abnormal speed etc.